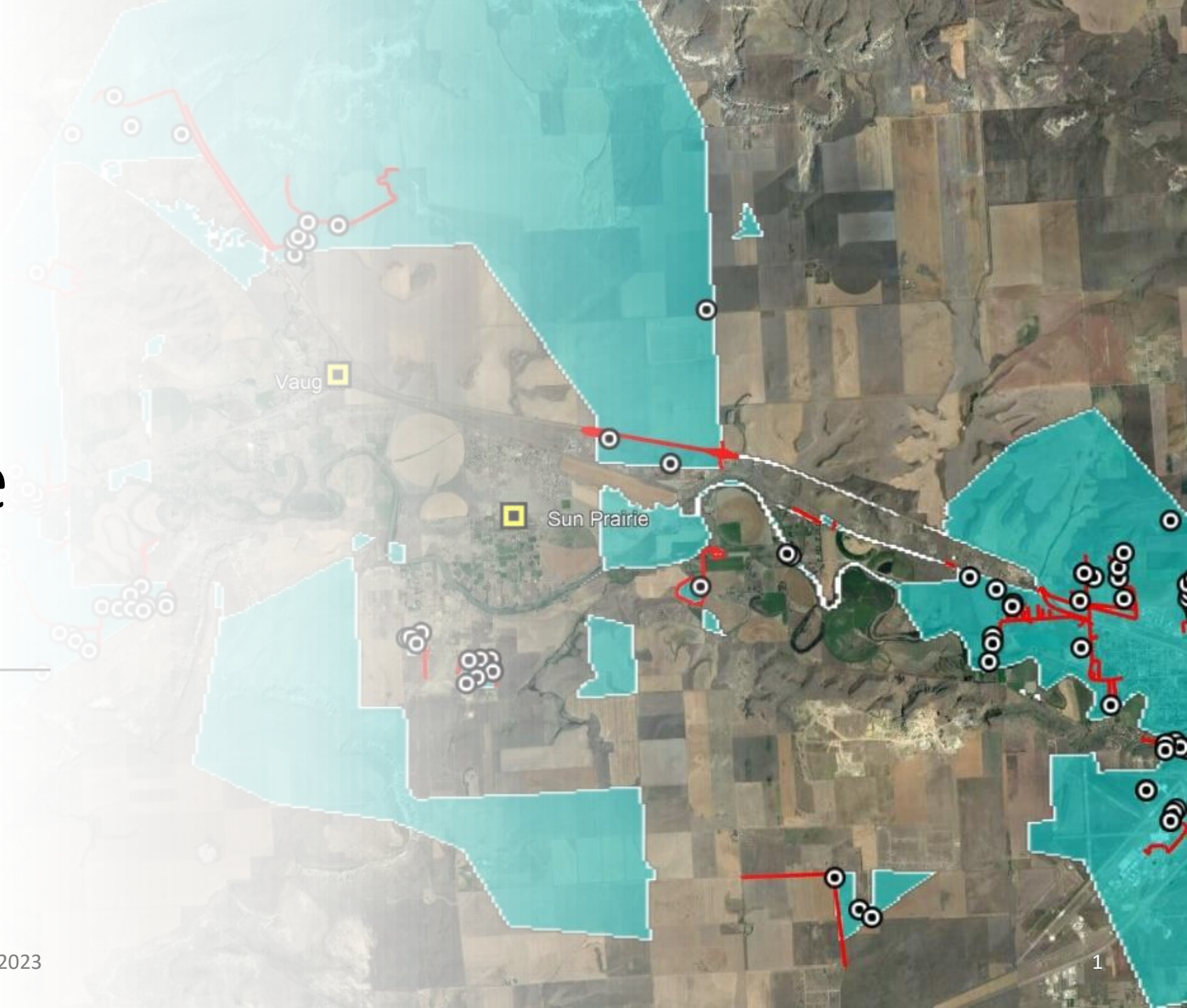


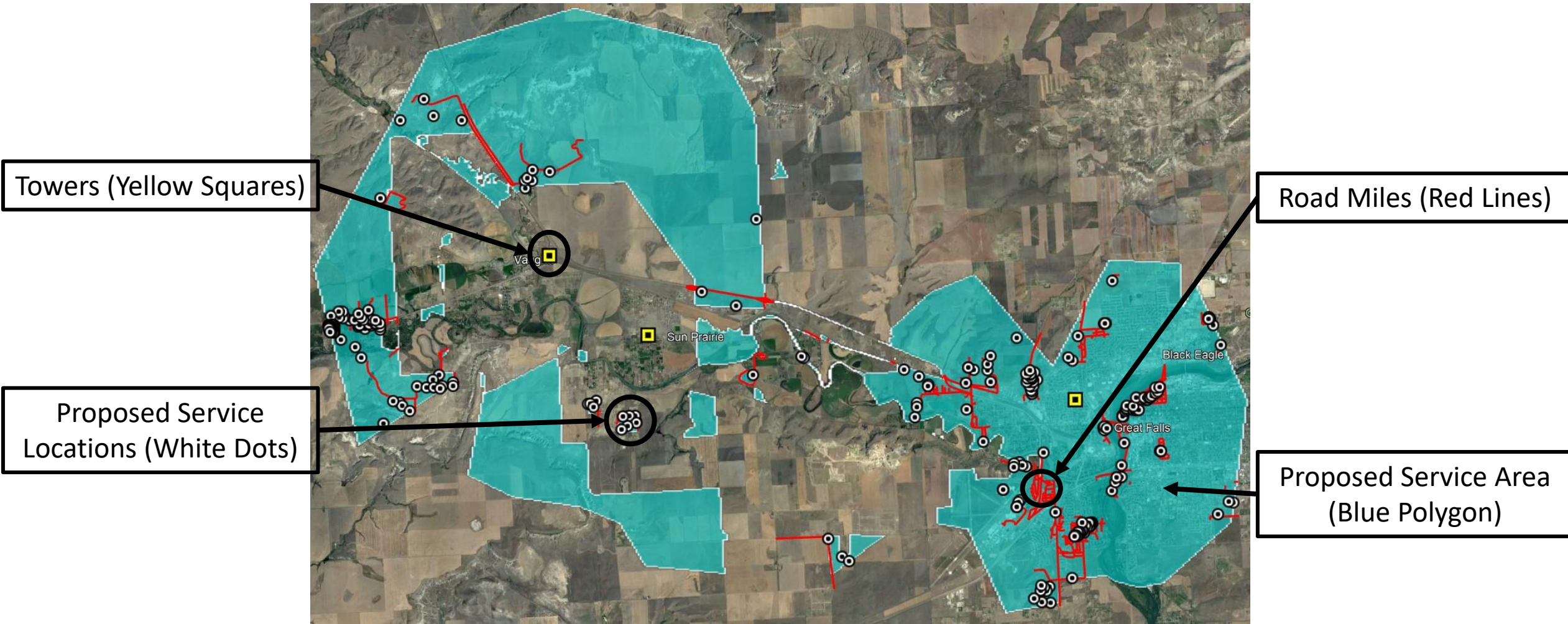
# ICMT01-RAN Exhibit B: Project Service Region

*Inland Cellular*  
*July 2023*





# Legend



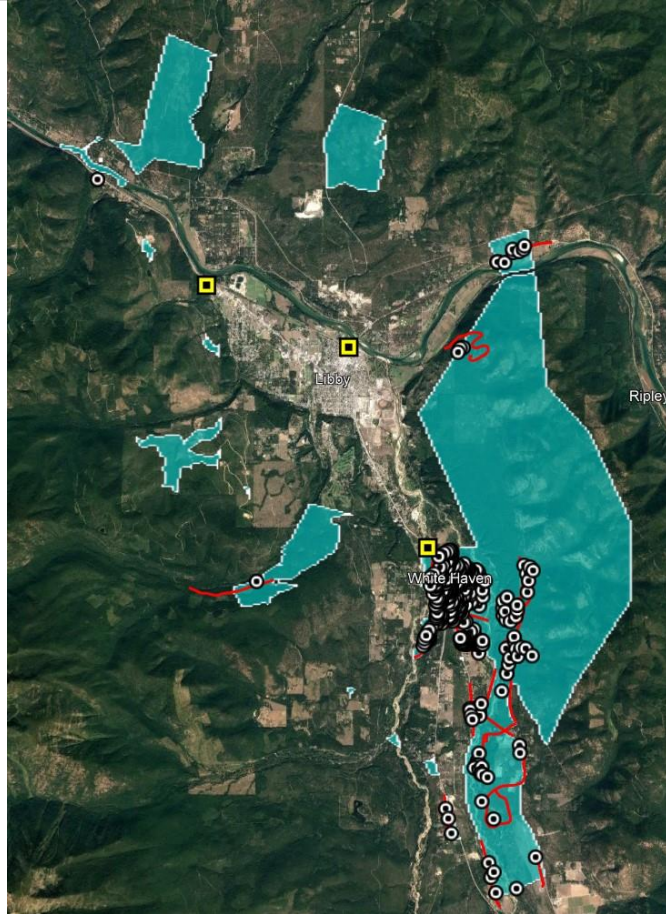
The background of the slide features a complex network of interconnected nodes and lines, resembling a molecular or data network structure. The nodes are represented by small circles of varying sizes, and the lines are thin, connecting the nodes in a web-like pattern. The overall color scheme is a gradient of teal and blue, with the network pattern being a lighter shade of blue.

# Deployment Maps

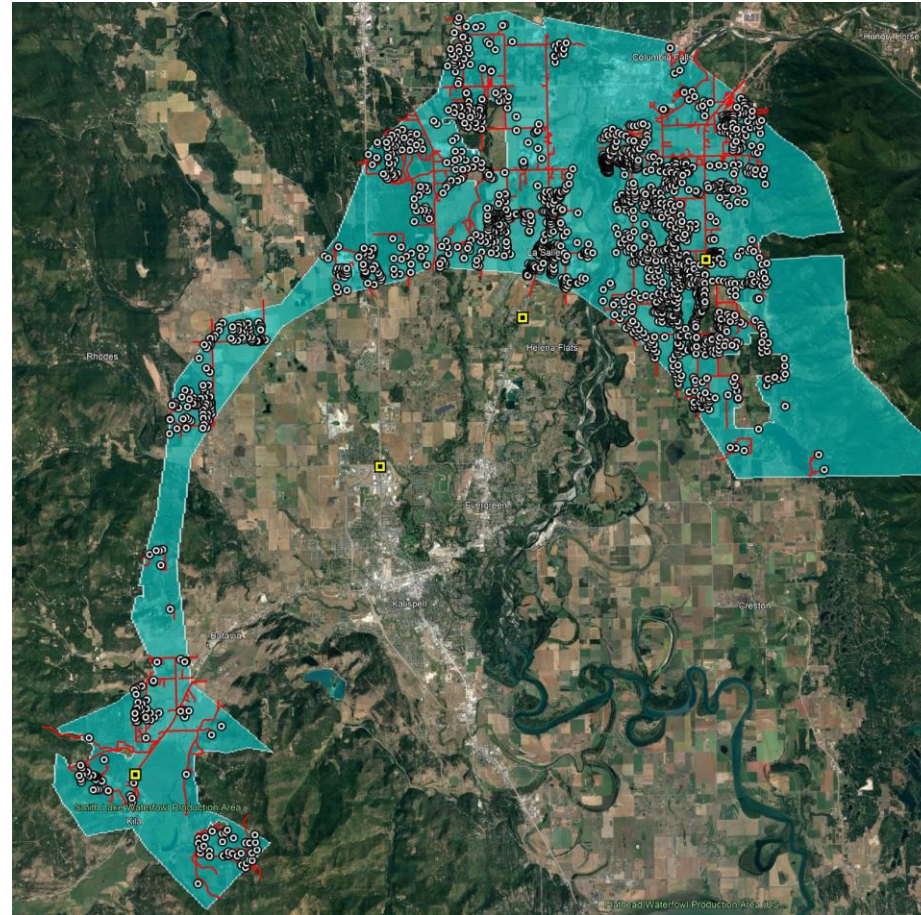
## 5 Regional Networks



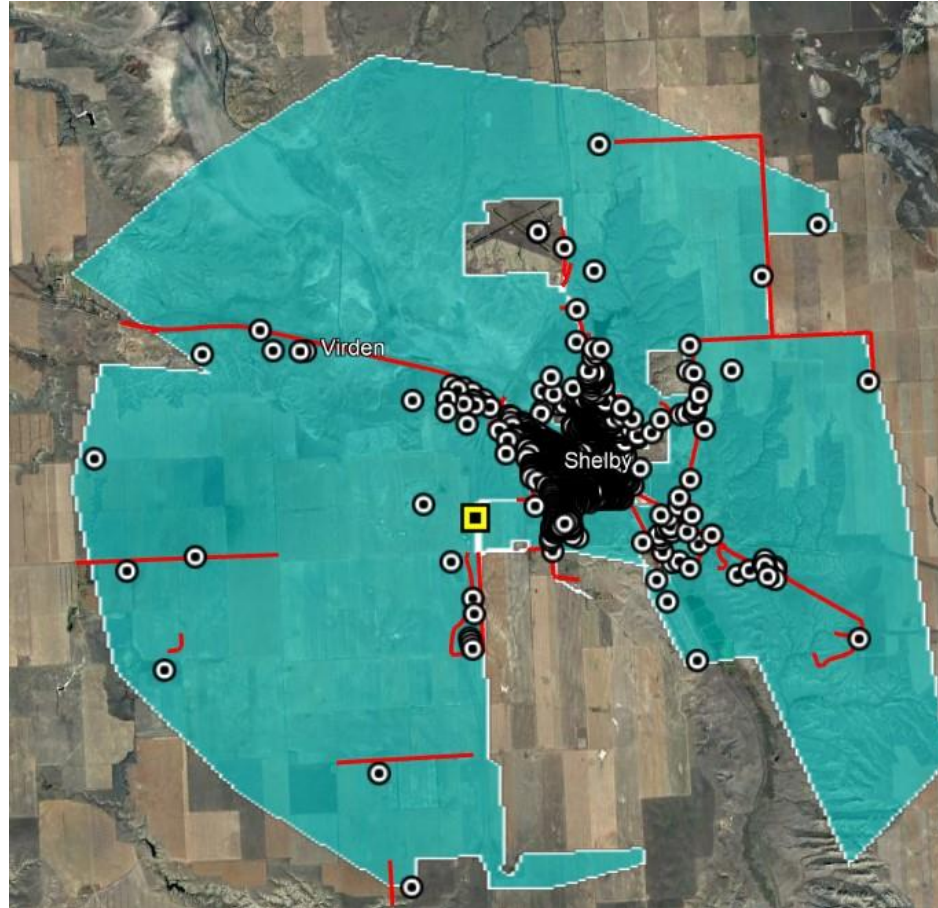
# Region 1: Libby



# Region 2: La Salle

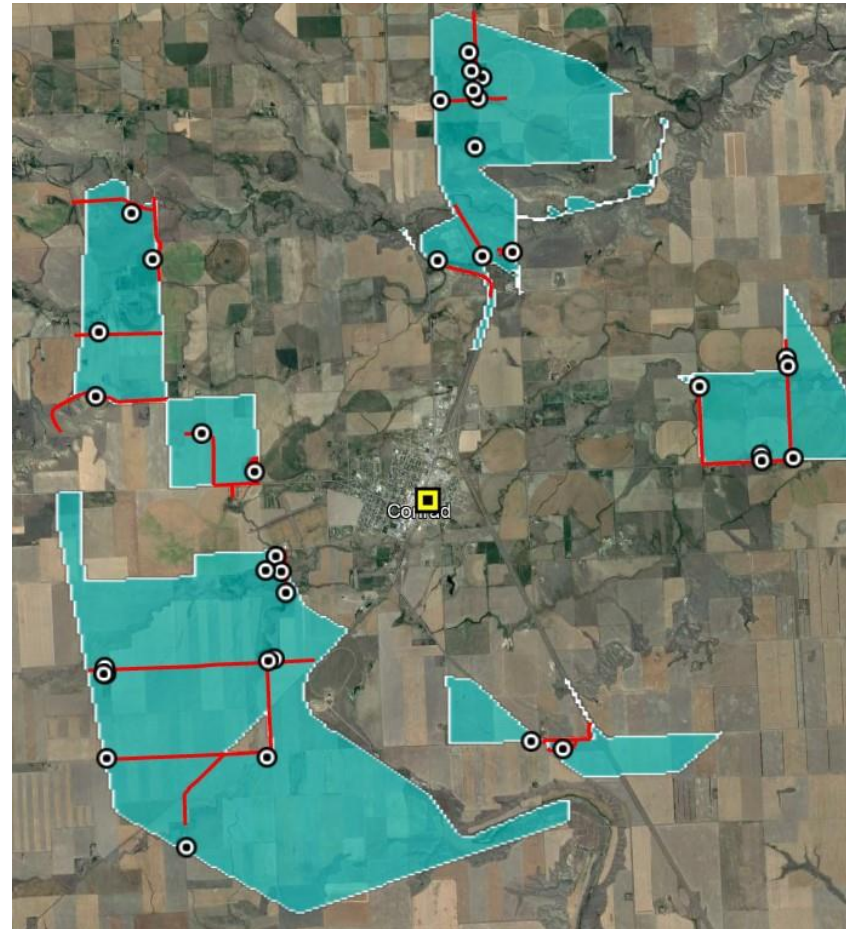


# Region 3: Vaughn (1 of 3)

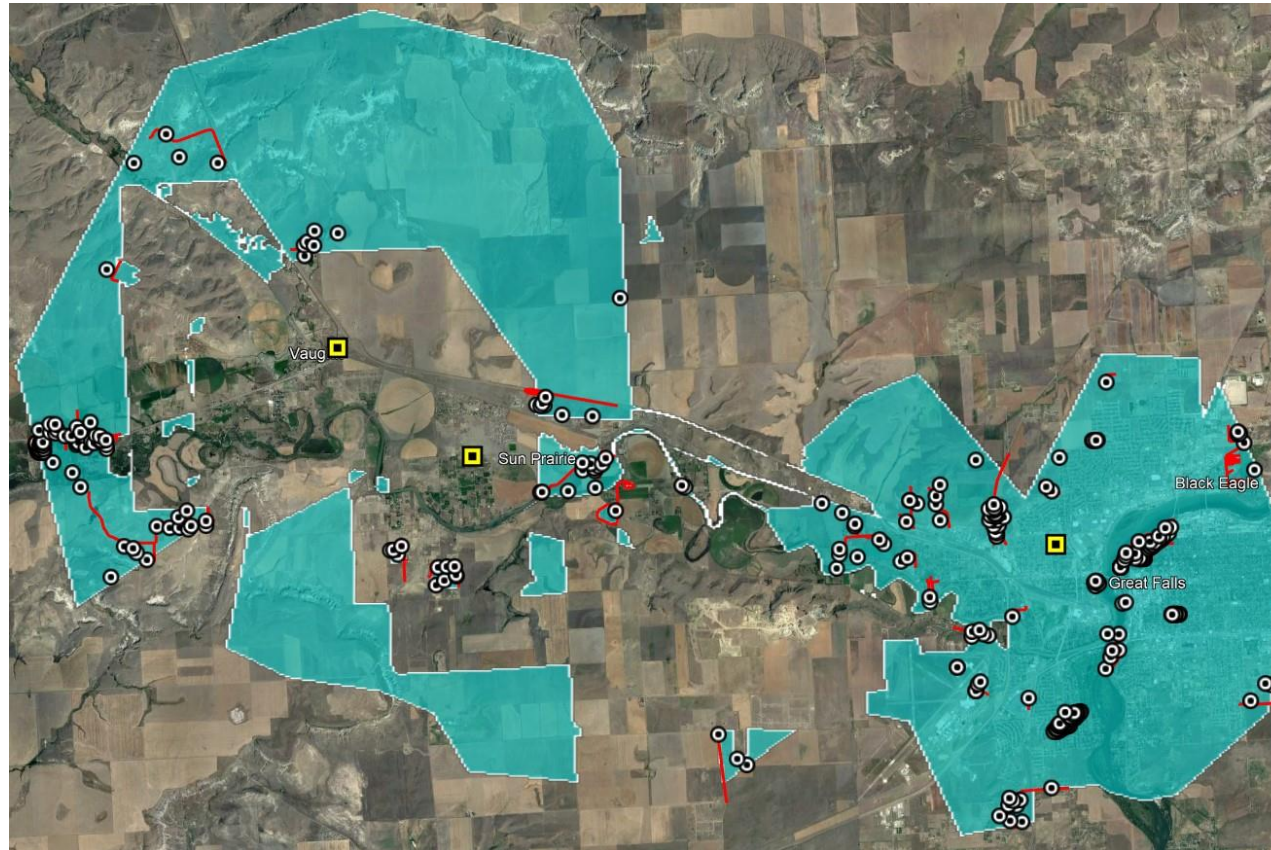




# Region 3: Vaughn (2 of 3)

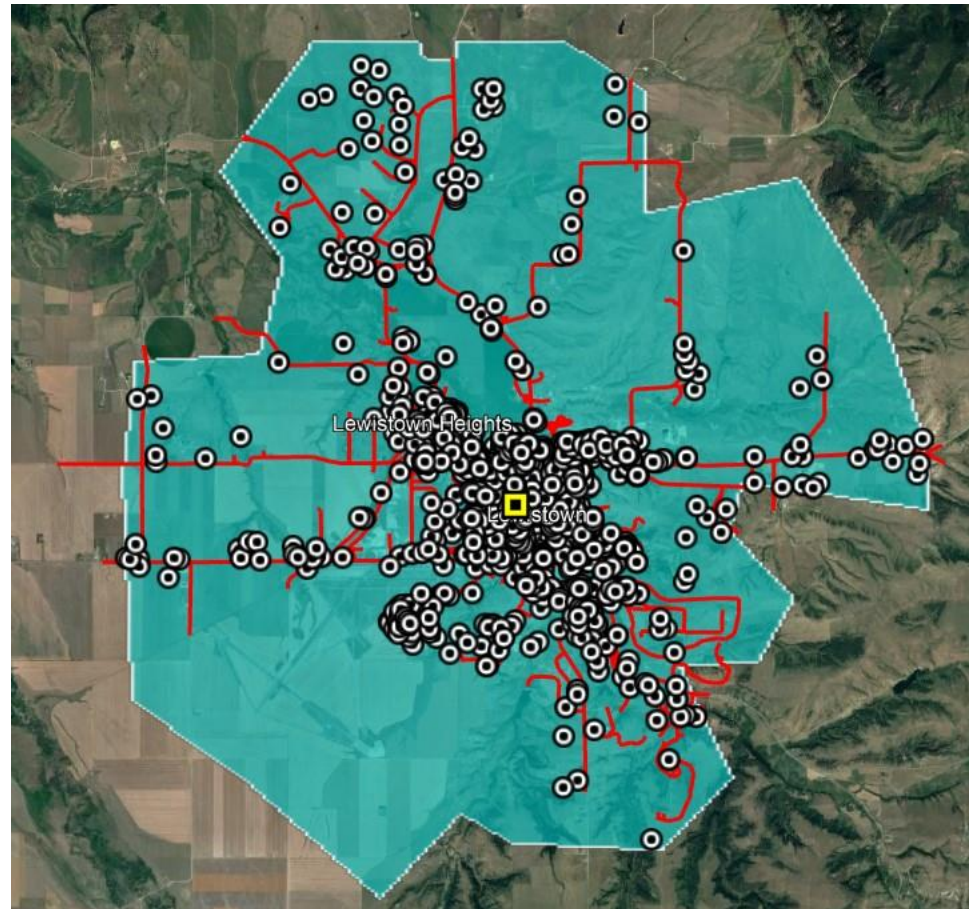


# Region 3: Vaughn (3 of 3)



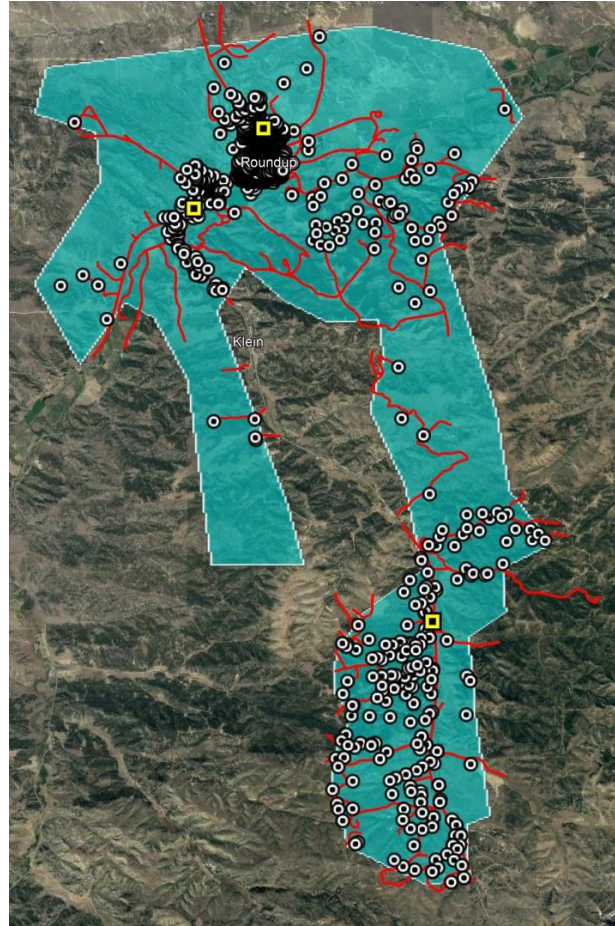


# Region 4: Roundup (1 of 4)



CONFIDENTIAL © Inland Cellular 2023

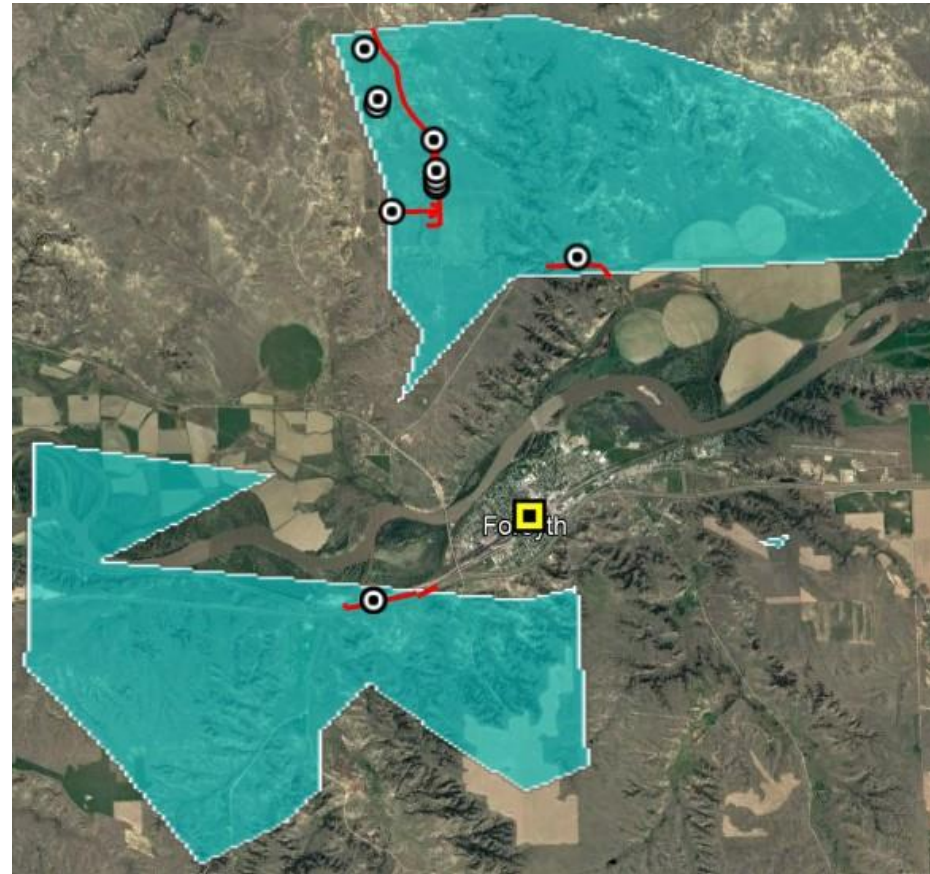
# Region 4: Roundup (2 of 4)



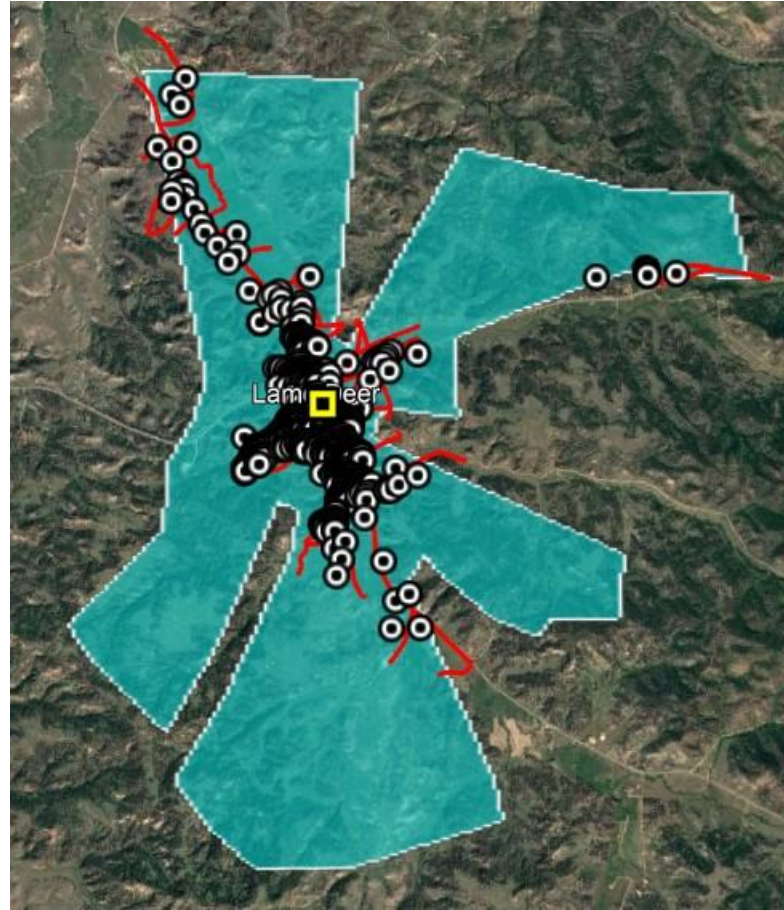


# Region 4: Roundup (3 of 4)

---



# Region 4: Roundup (4 of 4)





# Region 5: Wye

